

Dreloscopie®

DRELOSCOP

V7000
digital



Digital

Video Web Inspection System



■ **Controller**
in sturdy metall housing

■ **Operation panel in tilt design**
for convenient and easy operation
Industrial foil keyboard with function symbols

■ **Cross-shaped control cursors**
for camera positioning and menu navigation

TECHNOLOGY

■ **Digital** high resolution progressive scan camera technology, **full screen technology**, image resolution **1024 points x 768 lines (1280 x 960 optional)** for excellent image quality, sharpness and detail representation.

■ **16:1 motor-zoom lens** for an approximately **50-fold magnification**. 100% optical zoom. High-grade optics with **achromat close up** ensures a distortion-free display and colour representation, also at large magnification.

■ **17" CRT quality monitor**, optional **17" LCD/TFT display**
Flicker-free image representation at a display resolution of 1280 x 1024 pixels.

■ For all applications the optimum sight area.
standard: approx. 110 mm x 85 mm
optional: approx. 220 mm x 165 mm
optional: approx. 430 mm x 330 mm

■ Rotary encoder for synchronisation to the printing machine, high resolution for fine-adjusted positioning of the image cut-out in web direction.
Optional also available for Ex-range.

■ Sturdy electronics and housing in industrial design, camera cable in steel-armed metal hose.

■ **Dust-proof camera housing**
optimum protection for camera and optics

■ **Special reflector**
homogeneous illumination and reflection-free representation even at strongly reflecting materials



■ **Steel armed camera cable**
sturdy cables and plug-type connectors in industrial design

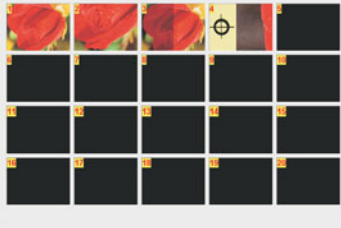
■ **High-power stroboscope**
Xenon-flashtube with extremely long lifetime

■ **Aluminium traverse and precision camera drive**
fast and exact camera positioning with high travel speed



Multilingual job menu

Quick, clear and easy input of job-specific parameters. All scan speeds and display periods on one view. Pre-selection of language by country code *.



Position and reference image storage

Storage of up to 20 camera positions including 20 reference images by keystroke.

Exact reproduction of zoom, brightness, flash source and split screen.

Miniature display of the stored positions.

Direct travel of single positions by keystroke.

Deactivation of single positions possible for the position scan.

Camera position indicator

Clear-arranged indication of current camera position.

The mini overview display represents the current print format.

For easiest navigation and orientation.

Temporary fading-in only during camera positioning.

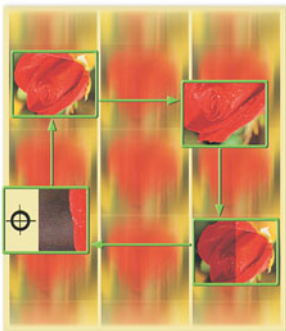
Permanent status line

Indication of current system status. Informs the operator with one look about:

- the active camera
- the selected scan mode
- the current flash source
- the active split-screen mode
- the active special functions

Including indication of current camera position in millimetres.

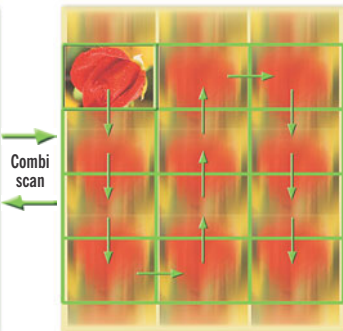
Pre-selection of language by country-code *.



Position scan

Automatic travel of stored camera positions and automatic display of reference images in split-screen mode.

With the new **BACK-function** a return to the previous position is possible by keystroke. Adjustable display period of camera positions.

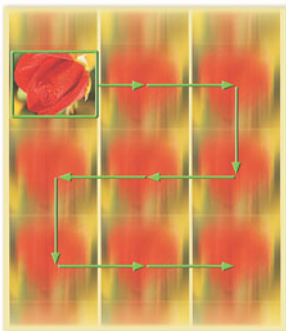


100% Raster scan

Automatic step by step scanning of the total print format.

The raster is adapted automatically to the selected image cut-out. The raster scan can be done as a kind of combination scan in alternation with the position scan.

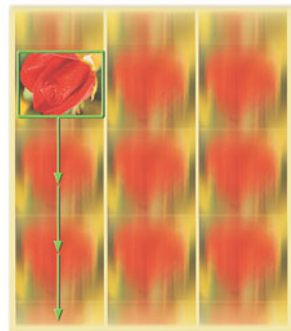
Display period is adjustable.



100% Linear scan

Automatic recording of the total print format at constant camera travel.

Zoom setting can be changed during scan mode. Adjustable scan speed.



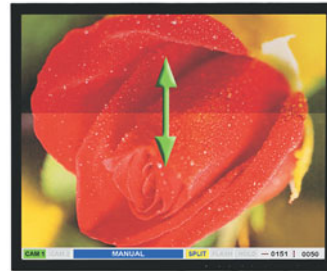
Slow motion scan

Automatic continuous scanning (slow-motion) in web direction.

Camera can be positioned during scan mode across the printing web.

With the new **BACK-function** a return of the scan direction is possible.

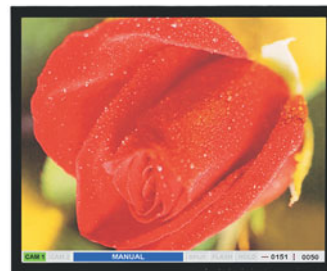
Adjustable slow motion speed.



Split screen

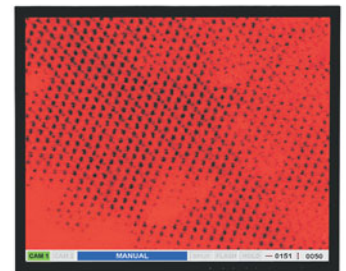
Allows an easy comparison between the current print and a stored reference image.

The screen can be split horizontally and vertically and can also be adjusted line by line.



Quick zoom

Quick change between minimum and maximum image zooming by one keystroke only.



180° image rotation

Rotation of the image representation by 180° by software, at changing alignment of the printing image.

* available languages on request

DRELOSCOP V7000 digital

THE DIGITAL CAMERA TECHNOLOGY

Technology:

Due to the application of latest Digital Progressive Scan Camera Technology the **DRELOSCOP V7000digital** offers a superior image quality. The printing web is scanned in full screen with the total camera resolution and not in half screen as with the conventional analogue systems. The transmission of the image information from scan to display by fire-wire interface is done absolutely digital. A conversion and the quality loss caused by this is omitted. The result is excellent sharpness and detail accuracy as well as premium colour reproduction.

A comparison:

The digital progressive scan method is applied in modern video technology, as DVD-video in the entertainments industry. Here the change from analogue VHS-video technology to digital DVD-video technology has already taken place.

Take your profit from the digital technology for your quality control.

Or would you still prefer an analogue VHS video recorder to a digital DVD recorder?

TECHNICAL DATA

- **Camera module:** digital progressive scan
- **Resolution:** 1024 points x 768 lines
1280 points x 960 lines (optional)
- **Sight area:** approx. 110mm x 85mm
approx. 220mm x 160mm (optional)
approx. 430mm x 330mm (optional)
- **Optics:** 16:1 motor zoom, approx. 50-fold magnification
- **Monitor:** 17" CRT monitor
TFT/LCD display (optional)
- **Encoder:** Rotary encoder, high resolution
Gear sensors and optical pick-ups (optional)
- **Mains voltage:** 230V-AC, 50-60HZ, 160W
110V-AC, 50-60HZ, 160W (optional)
- **Temperature:** 0°C ... + 40°C ambient temperature
-20°C ... + 60°C storage temperature

OPTIONS

Various additional equipments make a problem-free integration of the **DRELOSCOP V7000digital** into the production environment possible. The functional scope which can be extended on modular basis, ensures for all demands an optimum quality control and documentation of the products.



External control panel

For an optimum integration of the quality control into the operation concept of the machine. Easy console or cabinet installation with mounting frame.



Cable drag chain

For guidance of the camera cable along the traverse. Recommended for traverse lengths of more than 500 mm.

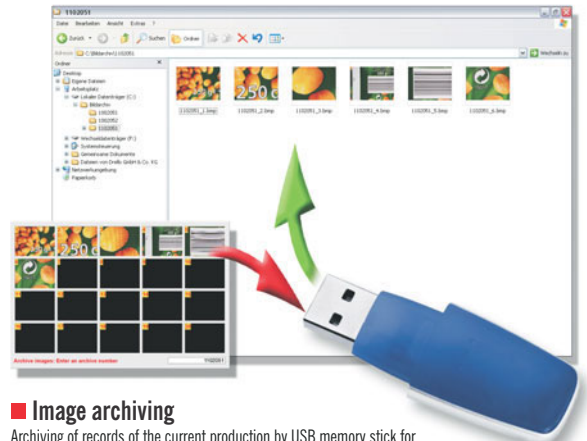


Image archiving

Archiving of records of the current production by USB memory stick for documentation purposes. Records can be processed with common graphic software. Optional archiving by PC-network transmission.



Operator control desk

Control desk with swivel-mounted industrial TFT-LCD display, integrated control panel and controller.



Double camera system

For control of front to back side print. Including transmitted light function for front to back register control.



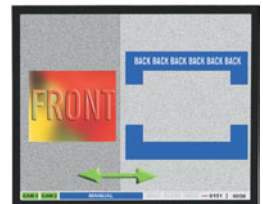
Back light flash

For control of front to back register by transmitted light function.



Alternating display

Display of web front or rear side in full screen mode for large size observation of each web side.



Simultaneous display

Simultaneous display of web front and rear side in split screen mode. You can adjust the image shares line by line, horizontally and vertically.



UV flash

For control of fluorescent printings.



Reflection flash

For control of transparent varnish, cold-seal and coatings.